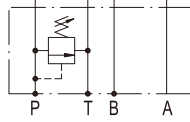
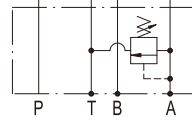


閥類型符號 SYMBOL

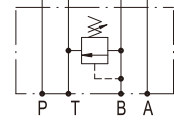
MRV - ※



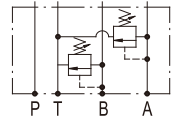
MRV-02.03P



MRV-02.03A



MRV-02.03B



MRV-02.03W

規格說明

SPECIFICATION :

型式 MODEL	最高使用壓力 MAX. OPERATING PRESSURE kgf/cm <sup>2</sup>	壓力調整範圍 PRESSURE ADJ. RANGE kgf/cm <sup>2</sup>	最大流量 MAX. FLOW l/min	重量 WEIGHT kg
MRV-02-※	250	1 : 7-70 2 : 7-140 3 : 7-210	35	1.6
MRV-03-※			70	3.5
MRV-04-※			190	7
MRV-06-※			300	12

型號說明

HOW TO ORDER :

**MRV - 02 - P - 3 - A - L**

旋轉型式 KNOB TYPE  
無標示為K: 把手旋鈕螺桿調整 (標準型式)  
NO MARK FOR K: HAFT TURNING KNOB BOLT ROD ADJUST (STANDARD TYPE.)  
L: 內六角螺桿調整 INNER HEXANGULAR BOLT ROD ADJUST.

調整把手方向 DIRECTION OF KNOB  
A: A口側 A PORT SIDE  
B: B口側標準型 B PORT SIDE STANDARD TYPE  
W: A, B口兩側 A PORT SIDE AND B PORT SIDE  
※ 04, 06為固定方向

壓力調整範圍 PRESSURE ADJUSTING RANGE  
1: 7-70 kgf/cm<sup>2</sup>      2: 7-140 kgf/cm<sup>2</sup>  
3: 7-210 kgf/cm<sup>2</sup>

口徑編號 SERIES NUMBER  
P: P PORT      A: A PORT  
B: B PORT

閥規格 VALVE SIZE  
02: 1/4"    03: 3/8"    04: 1/2"    06: 3/4"

系列編號 SERIES NUMBER

測試條件

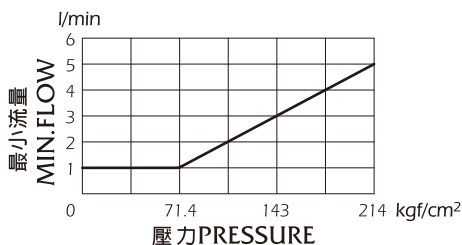
PERFORMANCE CURVES:

測試油黏度 TEST FLUID VISCOSITY : 35 cSt

測試油溫度 TEST TEMPERATURE : 50°C

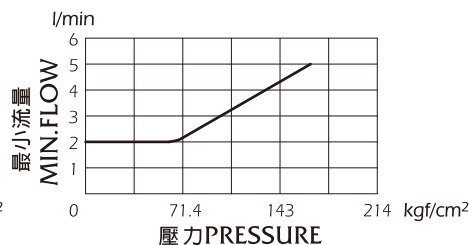
● MRV-02

最小流量 MIN.FLOW :



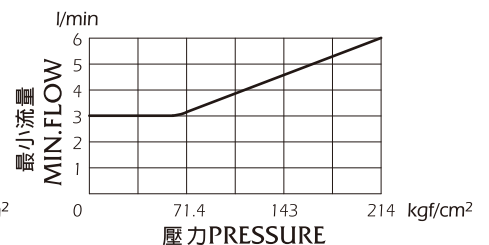
● MRV-03

最小流量 MIN.FLOW :



● MRV-04

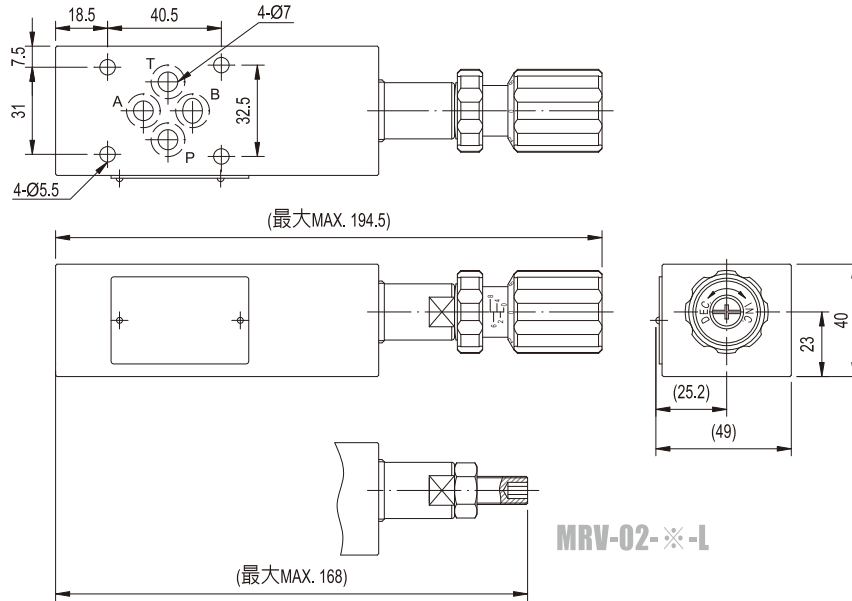
最小流量 MIN.FLOW :



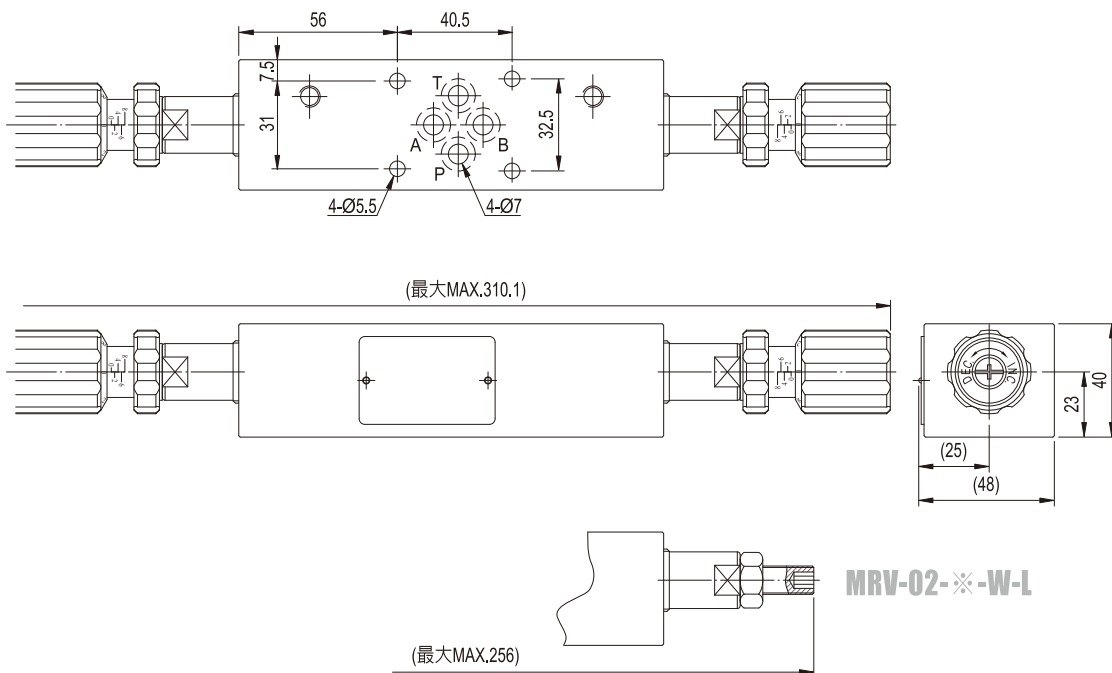
單位UNIT : mm

## 安裝尺寸 INSTALLATION DIMENSIONS

### MRV-02



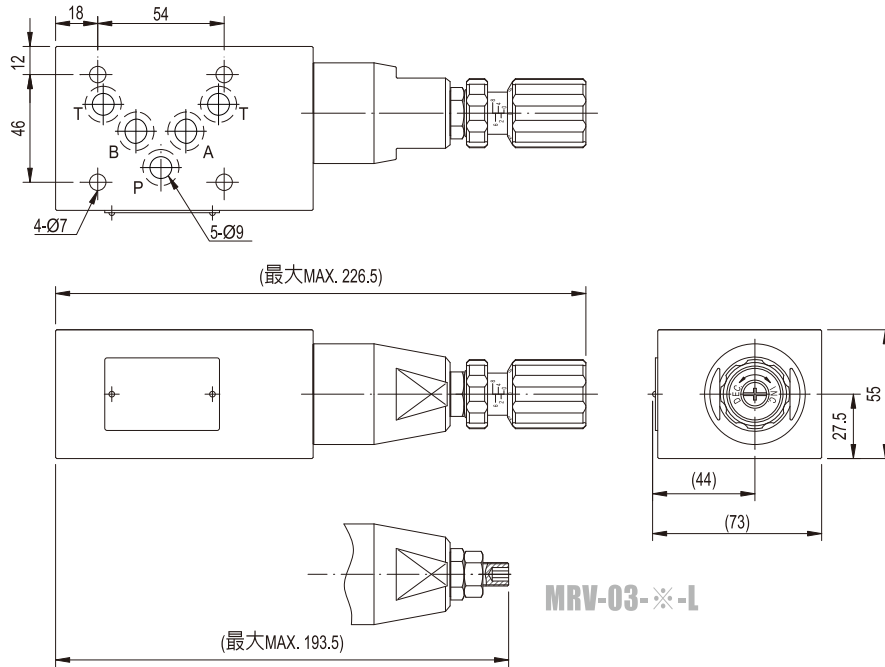
### MRV-02-W



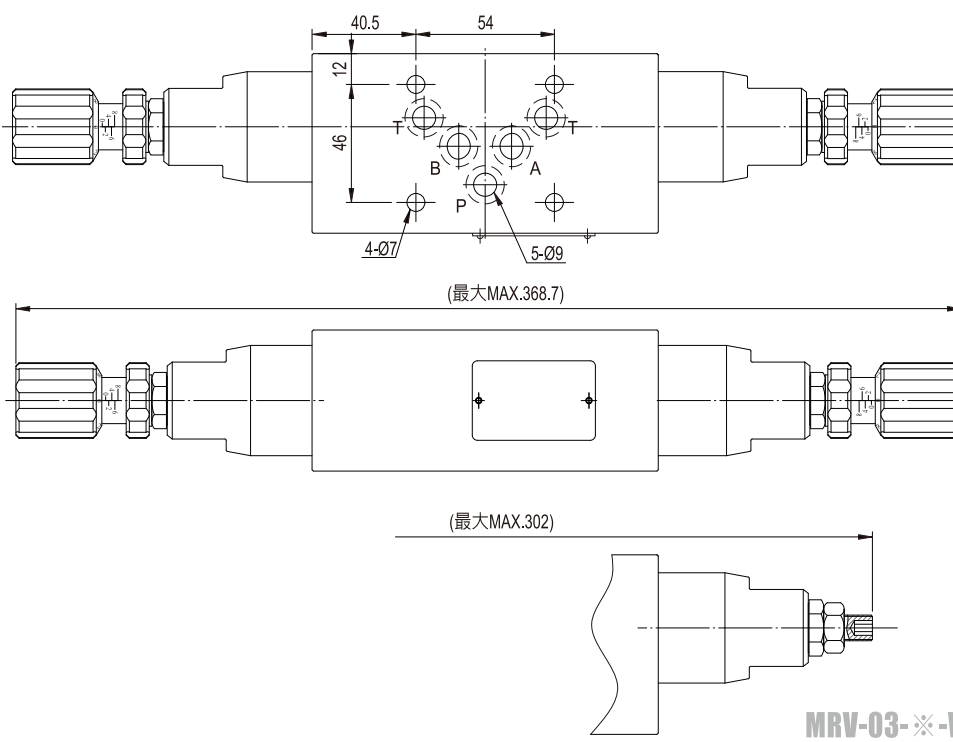
單位UNIT : mm

## 安裝尺寸 INSTALLATION DIMENSIONS

### MRV-03



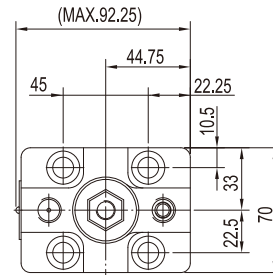
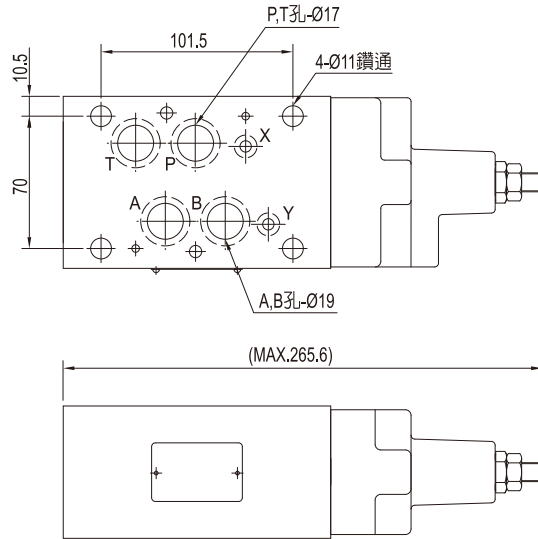
### MRV-03-W



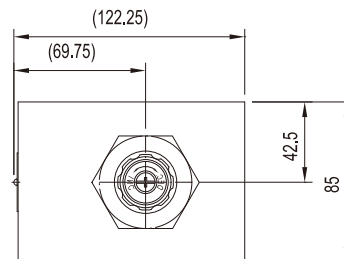
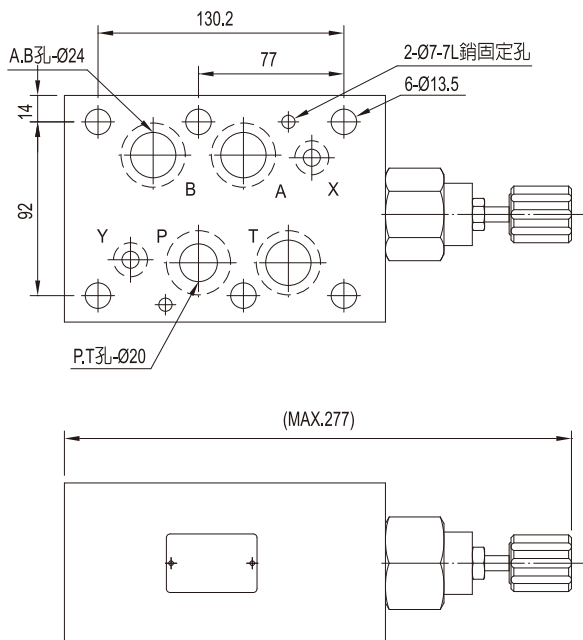
單位UNIT : mm

## 安裝尺寸 INSTALLATION DIMENSIONS

### MRV-04



### MRV-06



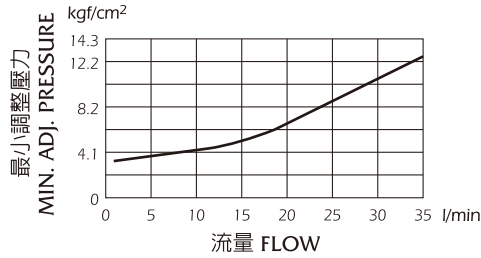
## 壓降特性 PRESSURE DROP

下列壓降特性是在油液黏度 35 cSt ( mm/s ) 和比重0.850條件下測得

Pressure drop curves based on viscosity of 35 cSt ( 160 SSU ) and specific gravity of 0.850

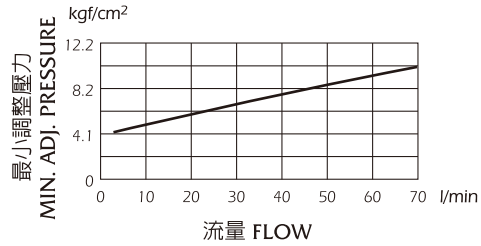
### ● MRV-02

#### 最小調整壓力 MIN.ADJ PRESSURE

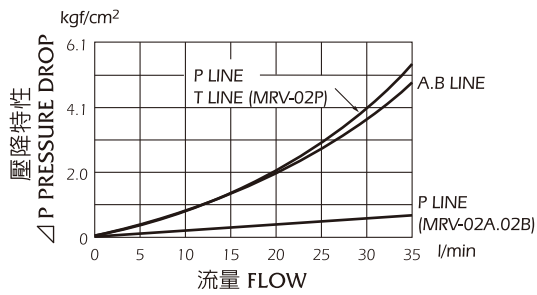


### ● MRV-03

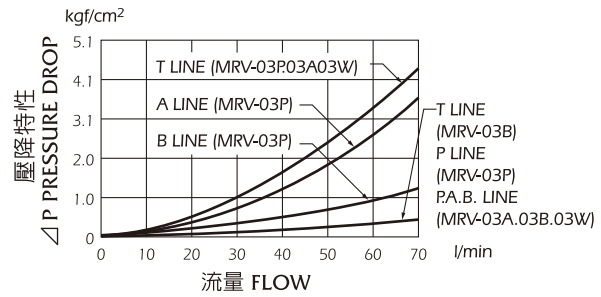
#### 最小調整壓力 MIN.ADJ PRESSURE



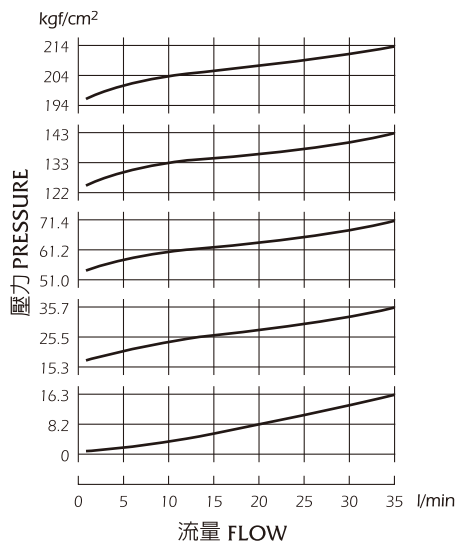
#### 壓降特性 PRESSURE DROP



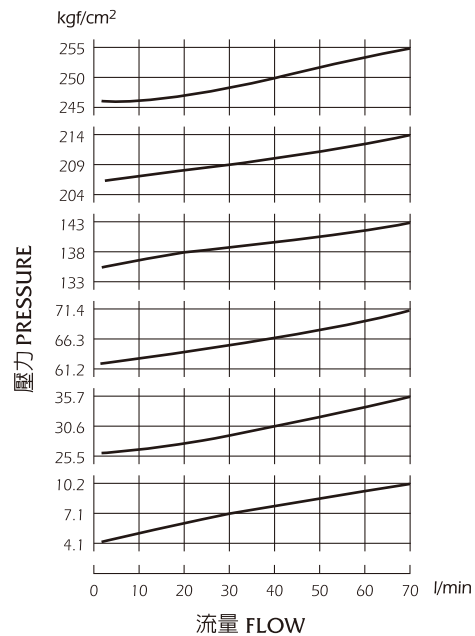
#### 壓降特性 PRESSURE DROP



#### 流量—壓力特性 NOMINAL OVERRIDE



#### 流量—壓力特性 NOMINAL OVERRIDE



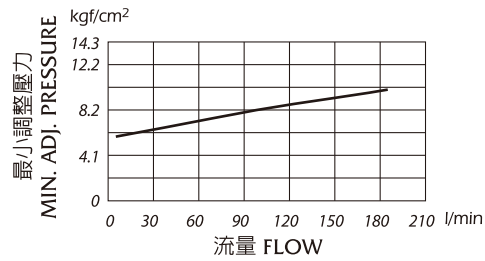
## 壓降特性 PRESSURE DROP

下列壓降特性是在油液黏度 35 cSt ( mm/s ) 和比重0.850條件下測得

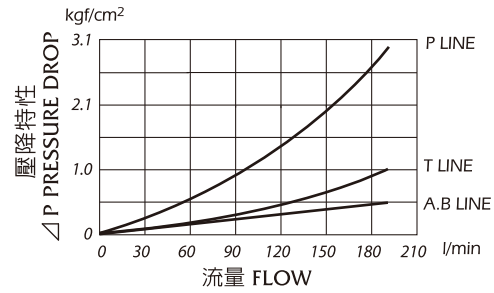
Pressure drop curves based on viscosity of 35 cSt ( 160 SSU ) and specific gravity of 0.850

### ● MRV-04

#### 最小調整壓力 MIN.ADJ PRESSURE



#### 壓力降特性 PRESSURE DROP



#### 流量—壓力特性 NOMINAL OVERRIDE

